

Embedding MRF in ICES advice

To embed MRF in ICES advice, a step change in approach is needed. WGRFS has identified a way forward using the **DAISY** model: **D**ata must be robust and accessible; an agreed and consistent approach should be used for MRF **A**dvice; **I**ntegration of MRF into assessment is needed; **S**cience is required to meet future needs; and these steps must be implemented **Y**early within the annual advice cycle (Figure 2). Twelve recommendations associated with the DAISY model that provide a roadmap for provision of MRF advice by ICES are described in the "Data", "Advice", "Integration", "Science", and "Yearly" subsections.

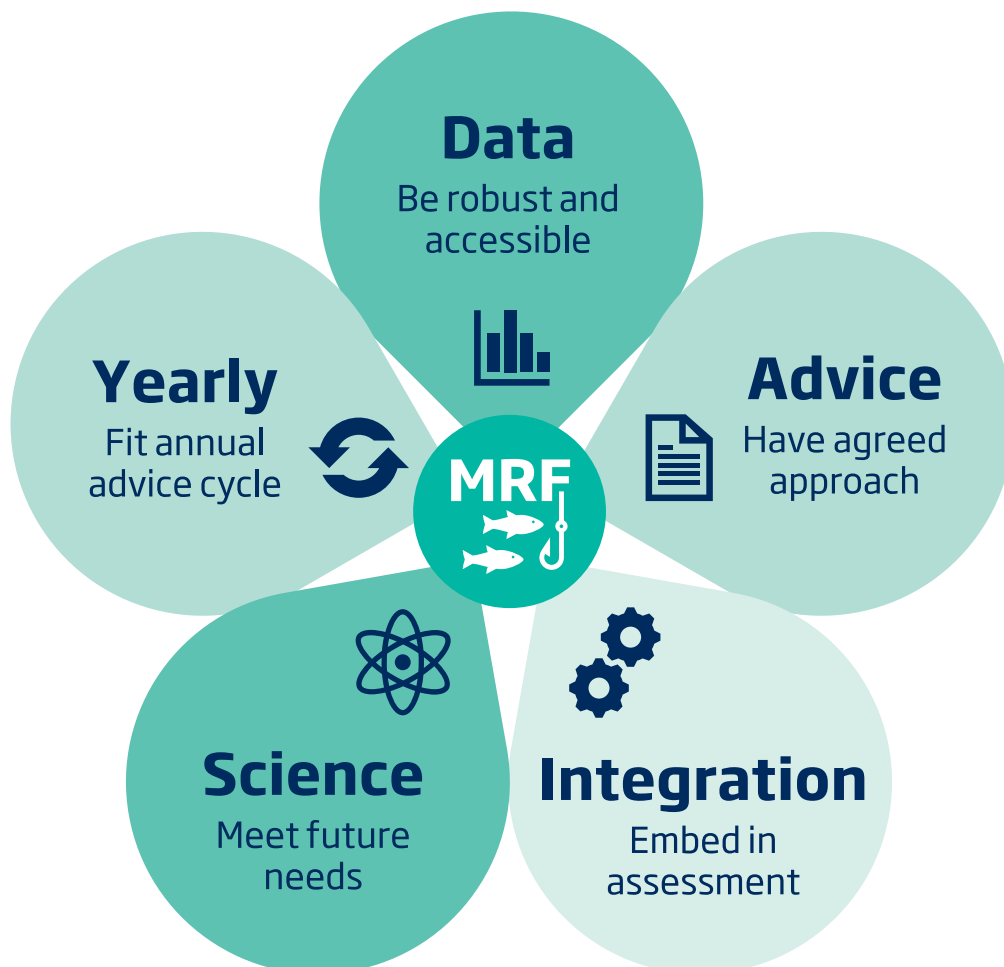


Figure 2 DAISY model for inclusion of marine recreational fisheries (MRF) in ICES advice

Data

Robust monitoring programmes are essential to collect the data needed to underpin ICES assessments and advice. Few MRF time-series exist and are of inconsistent coverage, extent, and quality across countries, making inclusion of MRF in stock assessment and advice challenging. ICES should highlight current issues and future needs to ensure that advice is based on a robust evidence base. To achieve this, the following actions should be taken: